

1"3/4 x 1"1/4

44,45 x 30,99 mm

Pas lant: 44,45 mm

Latime interioara lant: 30,99 mm

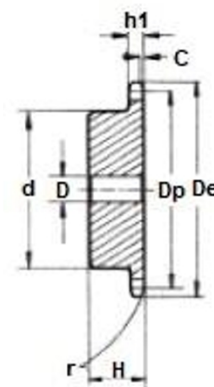
Diametru rola lant: 27,94 mm

Raza dinte "r": 44,0 mm

Latime raza "C": 5,0 mm

Latime dinte "h1": 29,4 mm

Material: otel C45E-UNI EN 10083-1



Z (numar de dinti)	Cod	De (mm)	Dp (mm)	d (mm)	D (mm)	H (mm)
8	PS 15008	132,0	116,15	74	25	70
9	PS 15009	148,4	129,96	88	25	70
10	PS 15010	162,3	143,85	100	25	70
11	PS 15011	176,3	157,77	112	25	70
12	PS 15012	189,3	171,74	125	25	70
13	PS 15013	204,2	185,75	130*	25	70
14	PS 15014	218,2	199,76	130*	25	70
15	PS 15015	232,3	213,79	145*	25	70
16	PS 15016	246,3	227,84	160*	30	75
17	PS 15017	260,0	241,90	160*	30	75
18	PS 15018	274,0	255,98	160*	30	75
19	PS 15019	289,0	270,06	160*	30	75
20	PS 15020	303,0	284,15	160*	30	75
21	PS 15021	317,0	298,24	170*	30	75
22	PS 15022	331,0	312,34	170*	30	75
23	PS 15023	345,0	326,44	170*	30	75
24	PS 15024	359,0	340,55	170*	30	75
25	PS 15025	373,0	354,66	170*	30	75
26	PS 15026	387,0	368,77	170*	30	75
27	PS 15027	401,0	382,88	170*	30	75
28	PS 15028	416,0	397,00	170*	30	75
29	PS 15029	430,0	411,12	170*	30	75
30	PS 15030	444,0	425,24	170*	30	75
31	PS 15031	458,0	439,37	180*	30	75
32	PS 15032	472,0	453,49	180*	30	75
33	PS 15033	486,0	467,62	180*	30	75
34	PS 15034	500,0	481,75	180*	30	75
35	PS 15035	514,0	495,88	180*	30	75
36	PS 15036	529,0	510,01	180*	30	75
37	PS 15037	543,0	524,13	180*	30	75
38	PS 15038	557,0	538,27	180*	30	75
39	PS 15039	571,0	552,40	180*	30	75
40	PS 15040	585,0	566,54	180*	30	75
45	PS15045	656,0	637,22	180*	30	75
50	PS15050	726,0	707,91	180*	30	75
57	PS15057	825,0	806,90	180*	40	123
60	PS15060	869,0	849,32	180*	40	123
76	PS15076	1095,0	1075,62	180*	40	123

Web : aLLindustrial.ro

Mobil : 0746 55 66 00

Fix : 0374 92 13 13

Fax: 0374 09 78 51

Email : contact@aLLindustrial.ro